



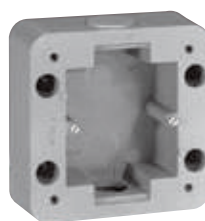
0 778 31



0 778 91



0 778 51



0 778 90

Suitable for public buildings, unsupervised passageways, car parks, communal areas in buildings

High resistance to IK 10 impacts and humidity

4 fixing points by plugging the plate directly on the wall and 4 blanking plates to be force-mounted on the plate (can only be removed by drilling)

Mechanisms supplied complete with cover plates

Pack	Cat.Nos	Socket outlets - IK 10	Pack	Cat.Nos	Plates - IK 10
1	0 778 35	<b>German standard 16 A - 250 V</b> 2P+E with safety shutters, screw terminals and cover IP 55	1	0 778 51	1-gang plate 110 x 110 mm
1	0 778 36	2P+E with safety shutters, screw terminals, no cover IP 20	1	0 778 52	2-gang plate 110 x 181 mm Horizontal or vertical mounting 71 mm fixing centres
1	0 778 37	2P+E with safety shutters, screw terminals and locked cover IP 55	1	0 778 53	3-gang plate 110 x 252 mm Horizontal or vertical mounting 71 mm fixing centres
1	0 778 31	<b>French standard 16 A - 250 V</b> 2P+E with automatic terminals and cover IP 55			<b>Surface-mounting boxes</b> Cannot be used for Cat.Nos 0 778 74/75 Supplied with 4 blanking plugs Take ISO 20 protective conductors
1	0 778 33	2P+E with automatic terminals and locked cover IP 55	1	0 778 90	1-gang 110 x 110 x 45 mm
1	0 778 32	2P+E with automatic terminals, no cover IP 20	1	0 778 92	2-gang 110 x 181 x 45 mm Horizontal or vertical mounting 71 mm fixing centres
1	0 778 82	<b>TV socket - IK 10 - IP 20</b> Male TV socket 0-2400 MHz Class A (Lte protected)			<b>Accessories</b>
1	<b>N</b> 0 778 99	<b>RJ 45 socket - IK 10 - IP 20</b> Cat. 6 <sub>A</sub> - STP	1	0 778 84	<b>Adaptors for Arteor/Mosaic functions</b> Take 2-module Arteor/Mosaic mechanisms (except special surface-mounting type) Adaptor with lockable cover - IP 55 - IK 10
1	0 778 91	Cat. 6 - FTP	1	0 778 80	Adaptor with cover - IP 55 - IK 10
1	0 778 50	<b>Cable outlet - IK 10 - IP 55</b> Supplied with cable grip	1	0 778 81	Adaptor without cover - IP 20
			5	0 778 96	<b>Replacement blanking plugs</b> Can only be removed by drilling Set of 4
			1	0 778 85	<b>Seals for surface correction</b> Made of foam to compensate for unevenness of the wall
			1	0 778 86	For 1-gang plate
			1	0 778 87	For 2-gang plate
			1	0 778 87	For 3-gang plate
			1	0 778 66	<b>Blanking plate</b> 2 modules
			1	0 778 83	<b>Fixing accessory</b> Fits on Batibox boxes for masonry and concrete, for fixing directly in the wall The Soliroc plate can be fixed onto this accessory with no need for drilling or using plugs in the wall 1-gang, can be joined to create 2-gang

