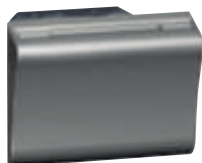


# Hotel equipment

## Arteor wiring devices



5 722 69



5 727 30



5 722 53



0 767 11



5 721 53

Support frame and plate selection charts **p. 480-487**

Mechanisms supplied with rocker plates, to be equipped with support frames (p. 476) and plates (p. 480 to 487)

Pack	Cat.Nos	MediaHub
1	5 722 69	<p>Allows the user to:</p> <ul style="list-style-type: none"> <li>- watch films from a PC or camcorder on TV: HDMI socket</li> <li>- watch the content of a USB stick on TV: 1 A USB Data socket</li> <li>- charge devices: USB socket (total power 3 A)</li> <li>- listen to music from a smartphone, tablet, etc on TV: Bluetooth function</li> </ul> <p>Inputs: 2 USB chargers including 1 USB Data, HDMI, Bluetooth audio Output: HDMI and USB Data Power supply with transformer provided 2 modules</p> <p>○ White ● Magnesium</p>
1	5 727 69	

Pack	Cat.Nos	Mechanical key card switches
1	5 722 30	<p>For energizing a circuit by inserting a key fob Cat.No 5 722 59 or a smart card (access card for a hotel room) Example of use: hotel room power supply only when guest is present Time-delay of approx. 30 sec. after card removal To be equipped with single pole latching relay Cat.Nos 5 722 27 or 5 727 27 (p. 462) 2 modules</p> <p><b>Key card switches 230 V</b></p> <p>○ White ● Magnesium ● Champagne ● Alu</p>
1	5 727 30	
1	5 700 55	
1	5 710 55	

Pack	Cat.Nos	Key card switches RFID
1	5 722 53	<p>For energizing a circuit for example meeting room, office, hotel room... Works only with ISO type contactless key card Cat.Nos 0 767 11/12/13 or other ISO type 13.56 MHz key card Time-delay of approx. 30 sec. after card removal Low capacity contact 230 V - 30 VA Lighting of the slot by LED 2 modules</p> <p>○ White ● Magnesium</p>
1	5 727 53	

Pack	Cat.Nos	Key card switches
10	5 722 59	<p><b>For mechanical key card switches</b> Enable use of key fob switches in hotels with key locks Supplied complete with a label holder for individual hotel identification</p> <p>○ White ● Magnesium</p>
10	5 727 59	
10	0 767 11	<p><b>For RFID key card switches</b> MIFARE contactless badge card ISO format (50 x 80 mm) Chip: 13.56 MHz Standard 1 KB memory</p>

Pack	Cat.Nos	Shaver sockets
1	5 721 55	<p>Conform to BS EN 61558-2-5. IP 24 For use with European, British, American, Australian 2-pin plugs. Screwless live and neutral terminals Double wound isolating transformer Automatic self-resetting overload feature Plug insertion operates micro-switch which energises transformer To be equipped with BS 2 gang - 3-module plates (p. 480-481) For flush-mounting boxes, use BS 2 gang box depth 48 mm, US type, Italian type boxes depth 48 mm or Cat.No 0 801 55 Power supply: 230 V - 50/60 Hz 3 modules</p> <p><b>230 V / 120-230 V</b></p> <p>○ White ● Magnesium ○ White - with earth connector ● Magnesium - with earth connector</p>
1	5 726 55	
1	5 721 53	
1	5 726 53	

Pack	Cat.Nos	Chimes
1	5 722 06	<p>230 V - 50 Hz Consumption: 65 mA 1 melody Tone level: 73 dB at 1 m Compatible with push-button Cat.No 0 416 45</p> <p>○ White ● Magnesium</p>
1	5 722 46	