

Atlantic stainless steel cabinets

304 L



Atlantic stainless steel cabinets

technical characteristics



Wall mounting lugs, horizontal or vertical installation



0 352 01 + 0 364 06



Cabinet and equipment selection chart p. 288

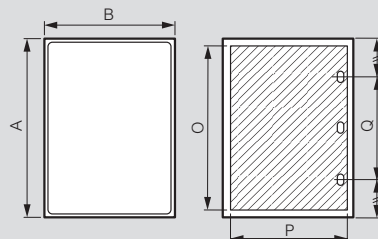
Suitable for harsh environments. Brushed stainless steel finish
 Door with rounded vertical edges.
 Double bar lock. Upper and lower protective hoods.
 Reversible cabinet. Self-centering positioning system for the equipment
 Optional depth adjustment starting from 600 x 400 x 250 mm cabinets, with slide rails Cat.Nos 0 367 43/44/45 (p. 292)
 Excellent resistance to corrosion and weather conditions
 Compatible with all Atlantic & Atantic stainless steel accessories

Pack	Cat.Nos	Stainless steel cabinets 304L	
		IP 66 according to standards IEC/EN 60529 (IP 55 for 2-door cabinets). IK 10 according to standards IEC/EN 62262 (EN 50102) Approvals: cULus: type 4x (type 12 for 2-door cabinets) Bureau Veritas, LCIE N° 80257-575296	
		Vertical version - 1 door	
		External dimensions	
		Height (mm) Width (mm) Depth (mm) Weight (kg)	
1	Metal door		
1	0 352 00	300 200 160	4
1	0 352 01	400 300 200	5.8
1	0 352 02	500 400 200	8.3
1	0 352 03	600 400 200	10.8
1	0 352 55	500 500 250	11
1	0 352 05	600 400 250	12
1	0 352 06	700 500 250	15
1	0 352 11	800 600 300	22
1	0 352 13	1000 800 300	38
1	0 352 14	1200 800 300	45
1	0 352 15	1400 800 400	66

Pack	Cat.Nos	Stainless steel wall mounting lugs
		For load up to 300 kg Horizontal or vertical installation Supplied with stainless steel screws Set of 4 304 L
1	0 364 06	

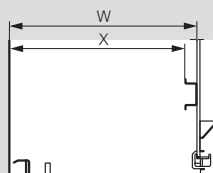
Usable dimensions

Doors

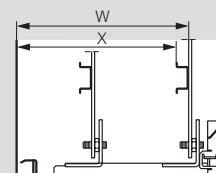


Cat.Nos	Cabinets			Door usable dimensions		Lock position
	Height A (mm)	Width B (mm)	Depth (mm)	O (mm)	P (mm)	Q (mm)
0 352 00	301.6	199.6	161.5	250	150	-
0 352 01	401.6	299.6	201.5	350	250	-
0 352 02	501.6	399.6	201.5	450	350	250
0 352 03	601.6	399.6	201.5	550	350	380
0 352 05	601.6	399.6	251.5	550	350	380
0 352 06	702.4	500	251.5	650	450	400
0 352 11	802.4	600	301.5	750	550	400
0 352 13	1003.6	800.6	301.5	950	750	600
0 352 14	1203.6	800.6	301.5	1150	750	700
0 352 15	1400.6	800.6	401.5	1350	750	700

Usable depth



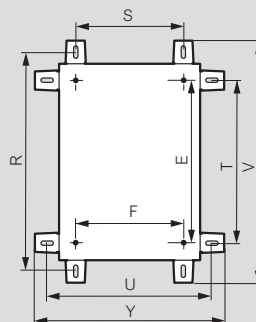
Adjustment of equipment (optional)



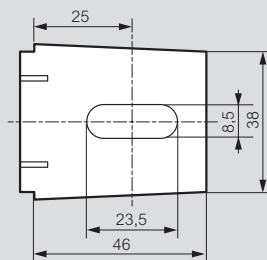
Cabinets	Back of cabinet	
Depth (mm)	W	X
160	140	125
200	180	165
250	230	215
300	280	265
400	380	365

Cabinets	With slide rails				
Depth (mm)	Cat.Nos for slide rails	W min	W max	X min	X max
250	0 367 43	93	213	78	198
300	0 367 44	93	263	78	248
400	0 367 45	93	363	78	348

Fixing



Cat.Nos 0 364 06/16



Cat.Nos	Vertical position		Horizontal position		V	Y	E	F
	R	S	T	U				
0 352 00	350	150	250	250	392	292	225	169
0 352 01	450	250	350	350	492	392	325	269
0 352 02	550	350	450	450	592	492	425	369
0 352 03	650	350	550	450	692	492	525	369
0 352 05	650	350	550	450	692	492	525	369
0 352 06	750	450	650	550	792	592	625	469
0 352 11	850	550	750	650	892	692	725	569
0 352 13	1050	750	950	850	1092	892	925	769
0 352 14	1250	750	1150	850	1292	892	1125	769
0 352 15	1450	750	1350	850	1492	892	1325	769