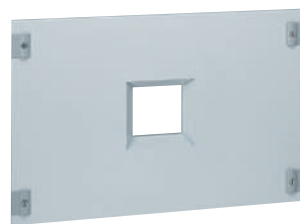
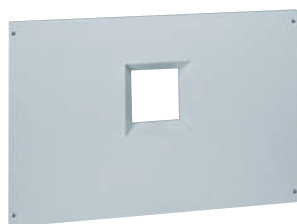


## Equipment for XL<sup>3</sup> 4000

for mounting on adjustable plates: DPX<sup>3</sup> 1600 fixed version



0 211 10

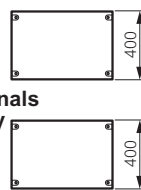
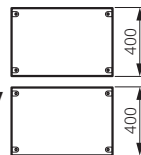


0 209 34

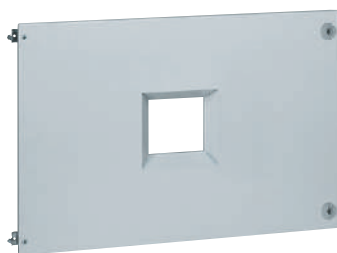
Adjustable plates are used for front terminal/rear terminal connection and mounting of motor-driven or rotary handles

Pack	Cat.Nos	Fixing fixed version devices
1	24 modules   36 modules 0 211 04	<b>Adjustable plates for devices in vertical position</b> For 1 DPX <sup>3</sup> 1600 with front terminals
1	0 211 06   0 211 03	For 1 DPX-IS 1600 or 1 DPX <sup>3</sup> 1600 with rear terminals
1	24 modules   36 modules 0 211 00 <sup>3</sup>   0 211 02	<b>Fixed plate for devices in horizontal or vertical position</b> For 1 DPX <sup>3</sup> 1600 or DPX-IS 1600 front terminals
1	0 207 36	<b>Adjustable plate for devices in horizontal position</b> For 1 DPX-IS 1600 or DPX <sup>3</sup> 1600 rear terminals in vertical position
<b>Metal faceplates for devices in vertical position</b>		
1	24 modules   36 modules 0 211 10 <sup>1</sup>	<b>For 1 DPX<sup>3</sup> 1600 only</b> 1/4 turn With captive screws
1	0 211 11 <sup>2</sup>   0 211 12 <sup>2</sup>	
1	24 modules 0 211 14 <sup>2</sup>	<b>For 1 DPX<sup>3</sup> 1600 with rotary or motor-driven handle</b> With captive screws
<b>Metal faceplates for devices in horizontal position</b>		
1	24 modules   36 modules 0 208 34 <sup>1</sup>	<b>For 1 DPX<sup>3</sup> 1600 only</b> 1/4 turn With captive screws
1	0 209 34 <sup>2</sup>   0 209 84 <sup>2</sup>	
1	24 modules 0 209 35 <sup>2</sup>	<b>For 1 DPX<sup>3</sup> 1600 rear terminals with motor-driven or rotary handle and front terminals with rotary handle</b> With captive screws
1	0 209 36 <sup>2</sup>	<b>For 1 DPX<sup>3</sup> 1600 front terminals with motor-driven handle</b> With captive screws

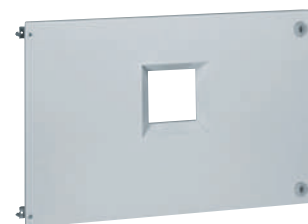
1: For fastening and sealing  
2: Hinges Cat.No 0 209 59 available as an option  
3 : DPX-IS only in vertical position



## Equipment for XL<sup>3</sup> 4000 for mounting on adjustable plates: DPX<sup>3</sup> 1600 draw-out version and automatic transfer switches



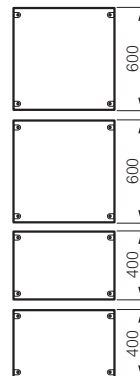
0 211 15



0 212 34

Adjustable plates are used for front terminal/rear terminal connection and mounting of motor-driven or rotary handles

Pack	Cat.Nos	Fixing draw-out version DPX <sup>3</sup> 1600, with front or rear terminals
1	24 modules 0 211 05	<b>Adjustable plates for devices in vertical position</b> For 1 DPX <sup>3</sup> 1600
1	0 207 35	<b>Adjustable plates for devices in horizontal position</b> For 1 DPX <sup>3</sup> 1600 with rear terminals
<b>Metal faceplates for draw-out version</b>		
Faceplates with hinges and lock		
1	24 modules 0 211 15	<b>Devices in vertical position</b> For 1 DPX <sup>3</sup> 1600
1	0 211 16	For 1 DPX <sup>3</sup> 1600 with motor-driven or rotary handle
1	0 212 34	<b>Devices in horizontal position</b> For 1 DPX <sup>3</sup> 1600
1	0 212 35	For 1 DPX <sup>3</sup> 1600 with motor-driven or rotary handle
<b>Fixing automatic transfer switch version DPX<sup>3</sup> 1600</b>		
1	24 modules 0 206 86	<b>Devices in horizontal position</b> For 2 fixed DPX <sup>3</sup> 1600
1	0 206 87	For 2 draw-out DPX <sup>3</sup> 1600
<b>Metal faceplates for automatic transfer switches</b>		
<b>For fixed version DPX<sup>3</sup> 1600</b>		
With captive screws		
1	24 modules 0 209 86 <sup>1</sup>	For 2 DPX <sup>3</sup> 1600
1	0 209 87 <sup>1</sup>	For 2 DPX <sup>3</sup> 1600 with motor-driven handle



1: Hinges Cat.No 0 209 59 available as an option