

## DPX<sup>3</sup> 630

earth leakage modules



0 260 63

Pack	Cat.Nos		Earth leakage modules
			Can be fitted onto DPX <sup>3</sup> /DPX <sup>3</sup> -I 630 Adjustable, sealable sensitivity: 0.03 - 0.3 - 1 - 3 A Adjustable, time delay: 0 - 0.3 - 1 - 3 s Test push-button Reset push-button Remote earth fault signalling contact Switch for mechanical tests (installation insulation test) Mounted underneath 230-500 V~
			<b>Standard</b>
		In (A)	
1	3P 0 260 60	4P 0 260 61	400
1	0 260 64	0 260 65	630
			<b>LED version</b>
			Monitors the isolation state of the installation via a series of LEDs
		In (A)	
1	4P 0 260 63		400
1	0 260 67		630

Dimensions  
see e-catalogue



For the old range of accessories for DPX 630 plug-in and draw-out versions  
**Please, consult us**

Automatic transfer switch control units  
p. 165

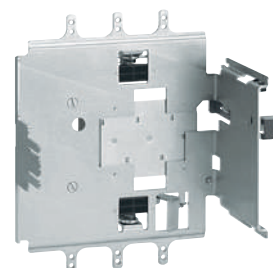


## DPX<sup>3</sup> 630

equipment and accessories



4 222 22



4 222 32

Pack	Cat.Nos		Plug-in version
			A plug-in is a DPX <sup>3</sup> fitted with special terminals and mounted on a plug-in base
			<b>Special terminals for plug-in/draw-out base</b>
			Set of incoming and outgoing terminals (6 terminals for 3P DPX <sup>3</sup> or 8 terminals for 4P DPX <sup>3</sup> )
			<b>Bases for DPX<sup>3</sup> only</b>
			Accept DPX <sup>3</sup> /DPX <sup>3</sup> -I fitted with special terminals
			Front terminal mounting base
			Flat rear terminal mounting base
			<b>Bases for DPX<sup>3</sup> with earth leakage module</b>
			Front terminal mounting base
			Flat rear terminal mounting base
			<b>Accessories</b>
			Set of 2 extractor handle
			Set of connectors (24-pin)
			<b>Draw-out version</b>
			A DPX <sup>3</sup> draw-out version is a plug-in DPX <sup>3</sup> fitted with a "Debro-lift" mechanism which can be used to withdraw the DPX <sup>3</sup> while keeping it on its base
			<b>"Debro-lift" mechanism</b>
			Supplied with a rigid slide and handle for drawing-out
			For DPX <sup>3</sup> base only
			For DPX <sup>3</sup> base with earth leakage module
			<b>Key-lock for "Debro-lift" mechanism</b>
			Enable locking of DPX <sup>3</sup> in drawn-out position
			Flat key n°HBA90GPS6149
			Star key n°ABA90GEL6149
			One key for DPX <sup>3</sup> only
			One key for motorised DPX <sup>3</sup> or with rotary handle
			<b>Accessories for "Debro-lift" mechanism</b>
			Handle for drawing-out
			Signalling contact (plugged-in/drawn-out)
			<b>Auxiliary contacts</b>
			Automatic auxiliary contacts for DPX <sup>3</sup> draw-out version (up to 2 contacts by DPX <sup>3</sup> )
			<b>Plates for transfer switches</b>
			Factory assembled
			A transfer switch plate is composed of one plate with interlock for 2 devices
			Plate for MCCB or trip-free switch fixed version
			Plate for MCCB or trip-free switch plug-in and draw-out version